

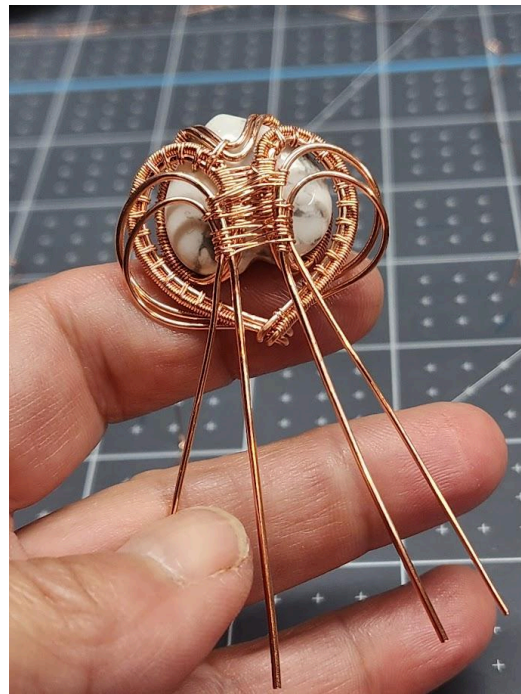
Perfectly Twisted Jewelry

HOME SHOP MY YOUTUBE ABOUT CART (0)



Start with 16 inches of wire for your Claudia pendant. Here is a link to the video tutorial.

Claudia! <https://youtu.be/8jbHmUNPTW0>
The following images are read from left to right.

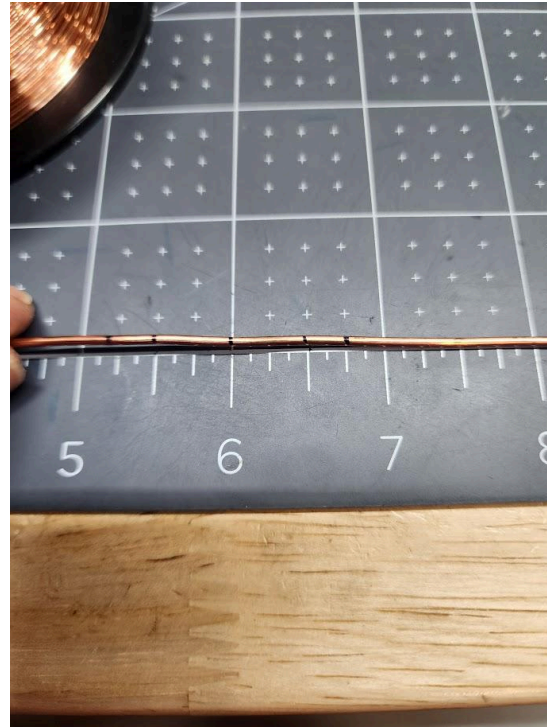
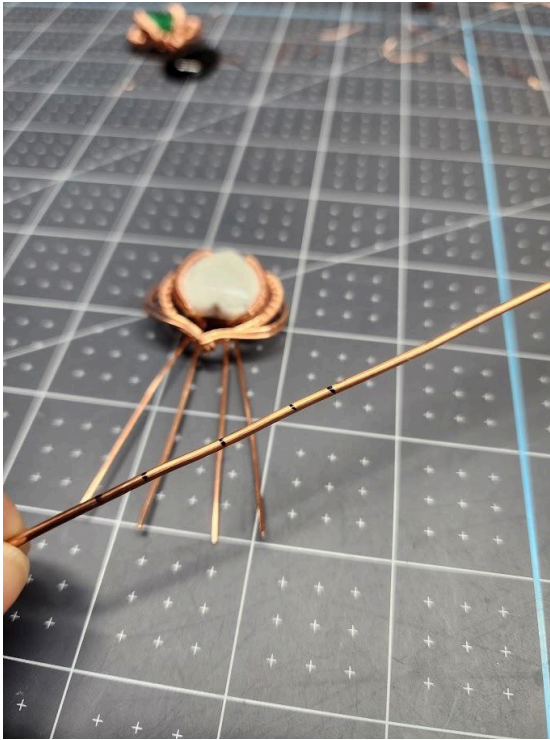


Create your Claudia pendant, but leave the back

Use 8 inches of 14 gauge, round, soft copper

wires down rather than curling them to end them.

wire for the pin (can be used for hair or knitted scarf)



Mark the wire at the center, then left and right at $\frac{1}{2}$ inch marks and again on both sides at another $\frac{1}{2}$ inch marks.

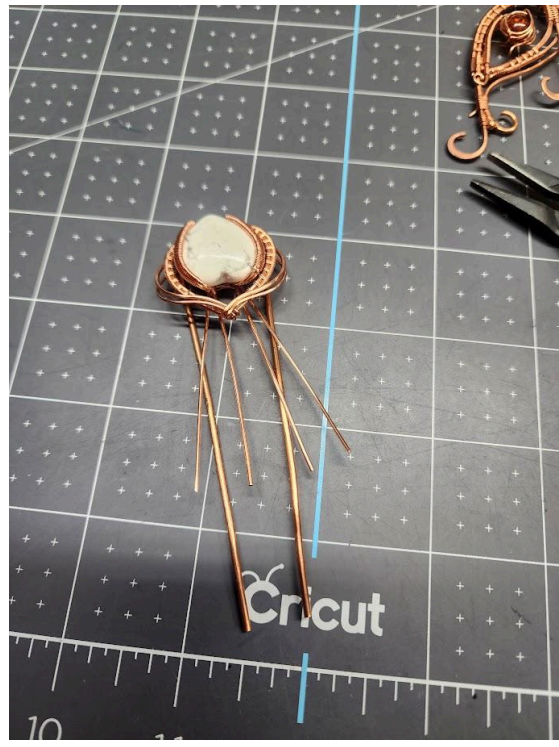
NOTE: I know I show only a quarter inch mark in this pic, it's better at $\frac{1}{2}$ inch marks.



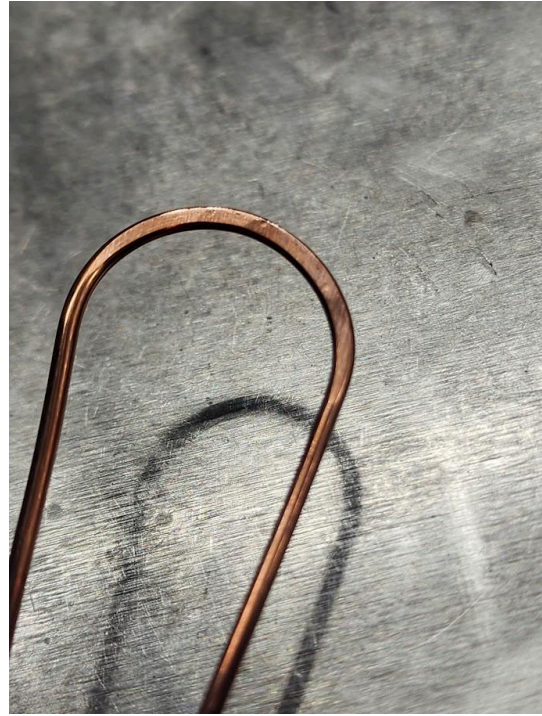
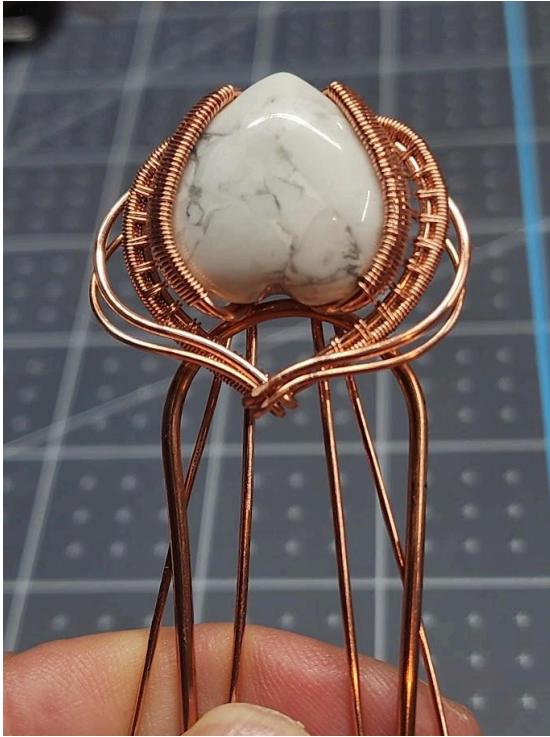
Use a 3/4 inch dowel and bend the 14g in half...



It should fit the wrapped stone pendant frame nicely.

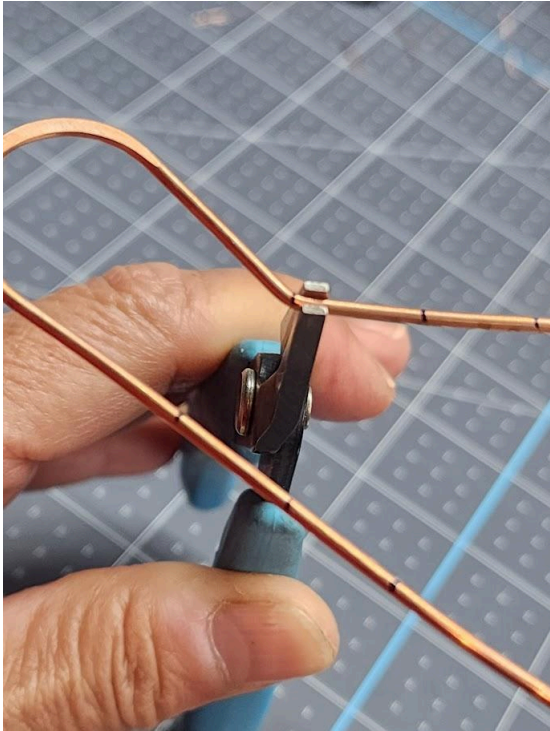


Hammer and sand your pin

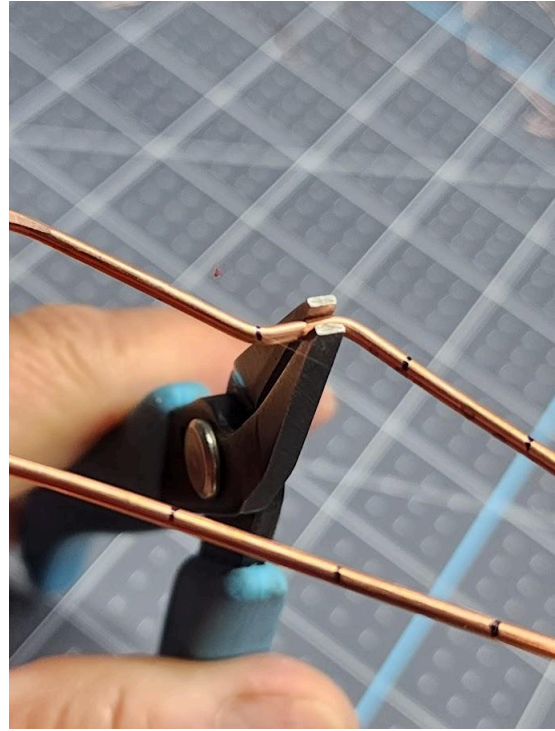


Make 1/2 inch marks at the center of the 'legs'

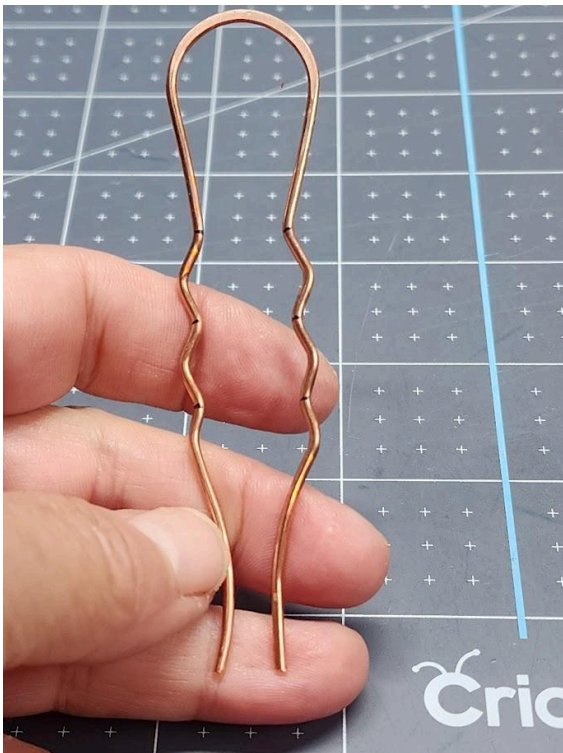




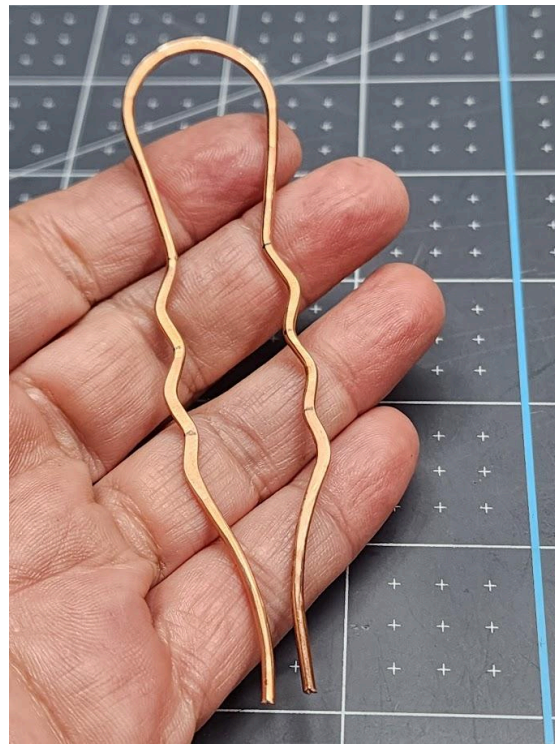
Use flat nose pliers and bend in a 'zig zag' way



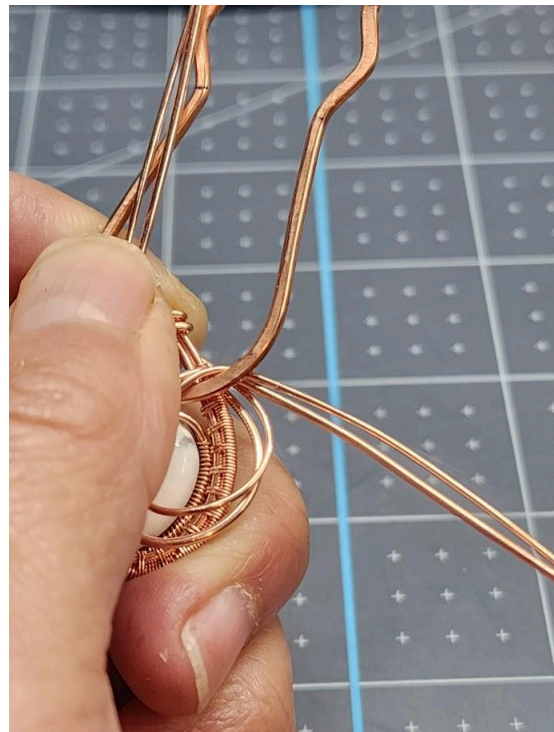
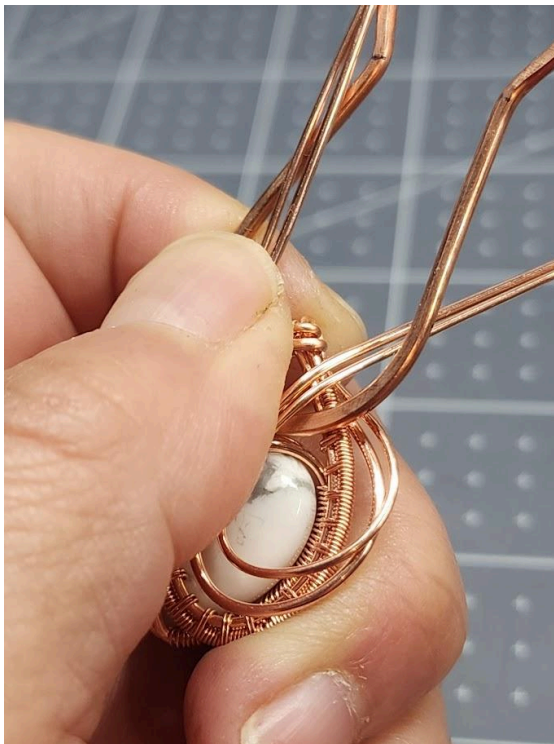
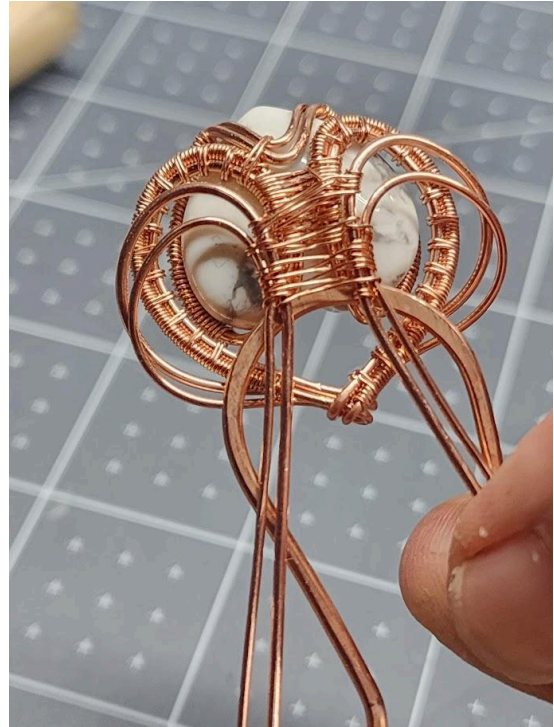
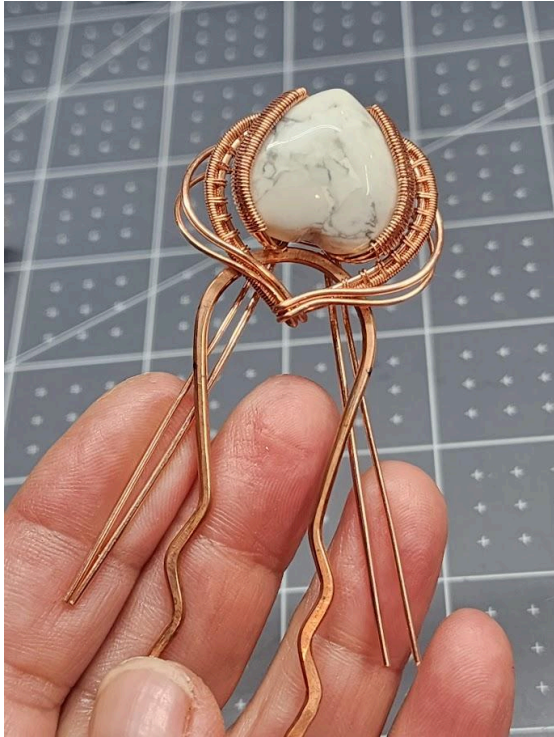
Hammer and sand your pin.

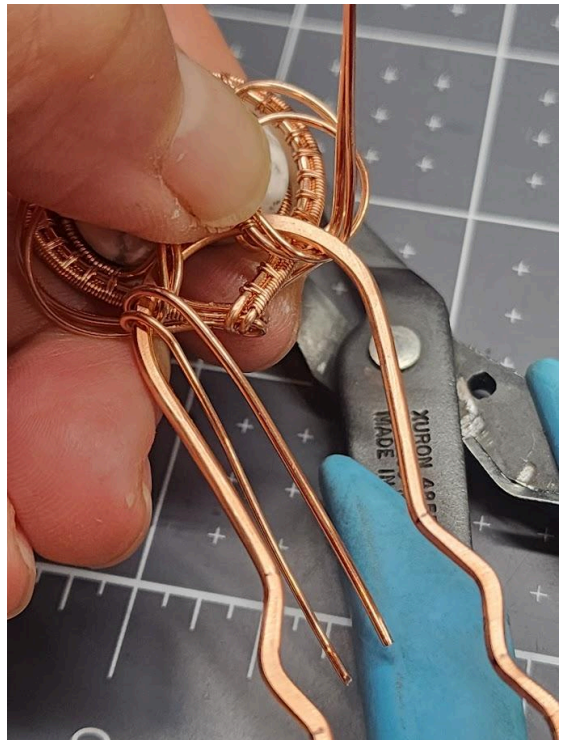
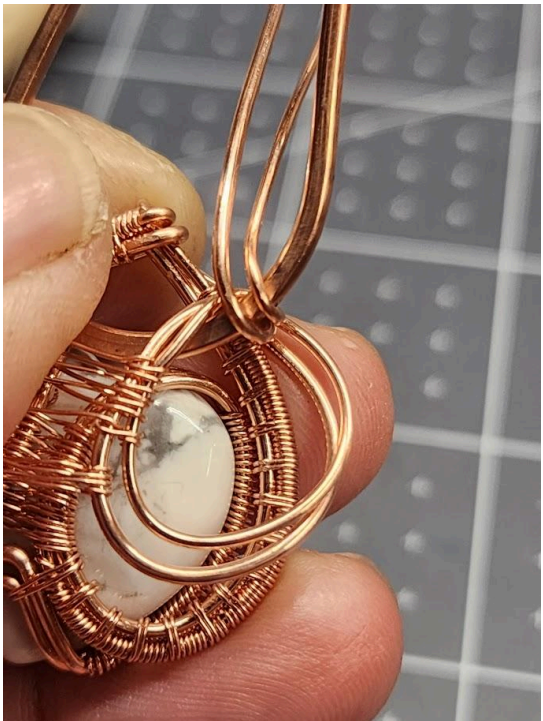
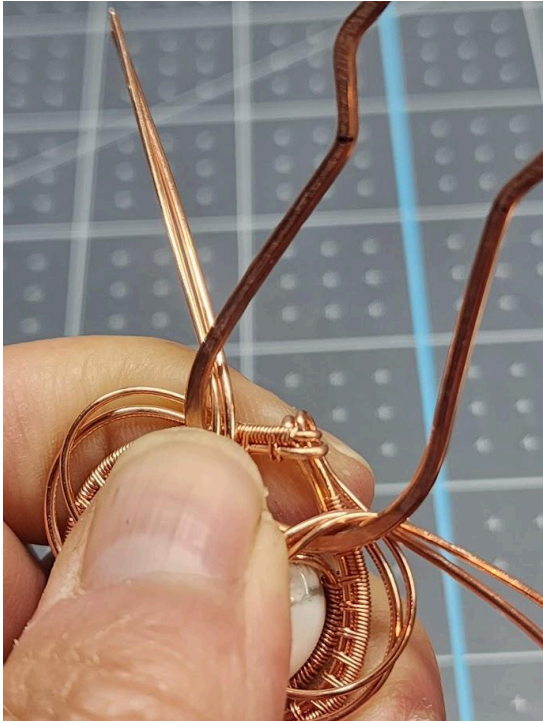


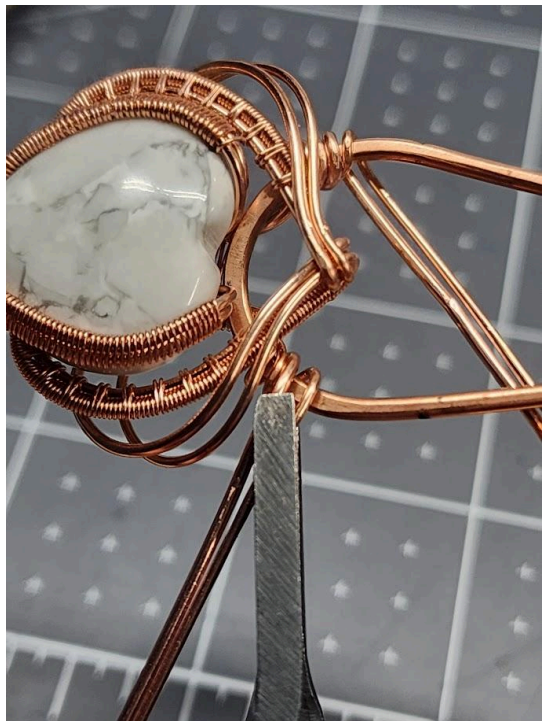
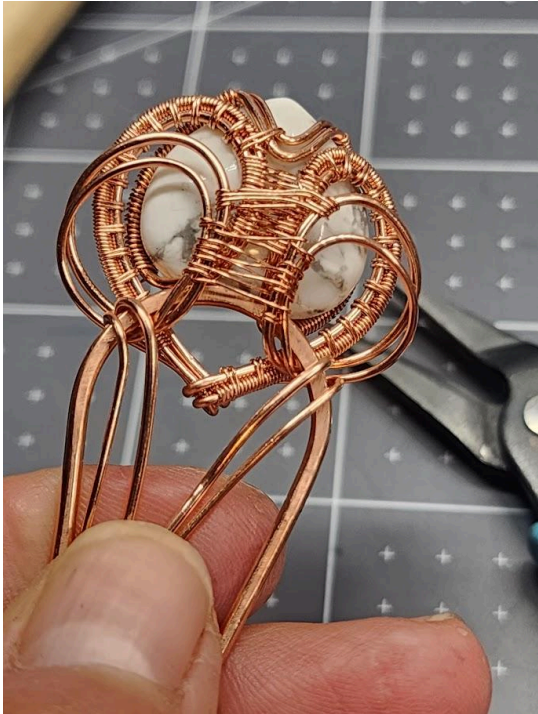
Use the back wires from the pendant frame to easily attach to the pin.

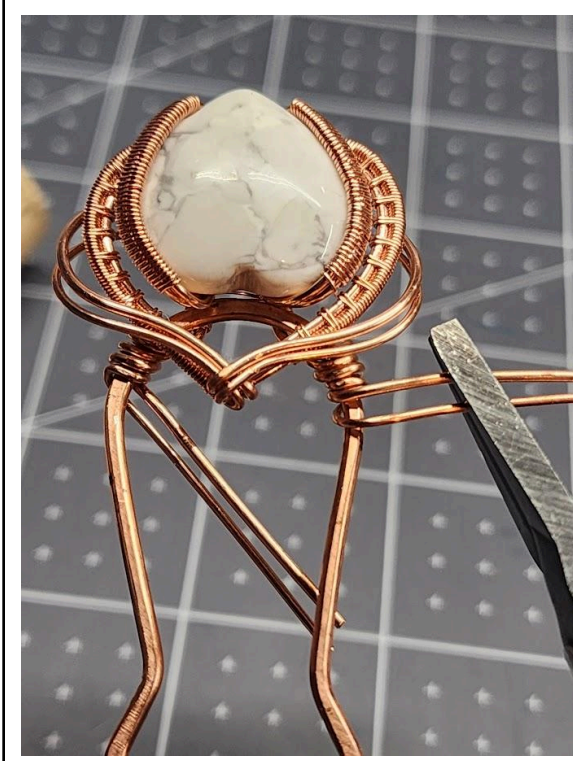
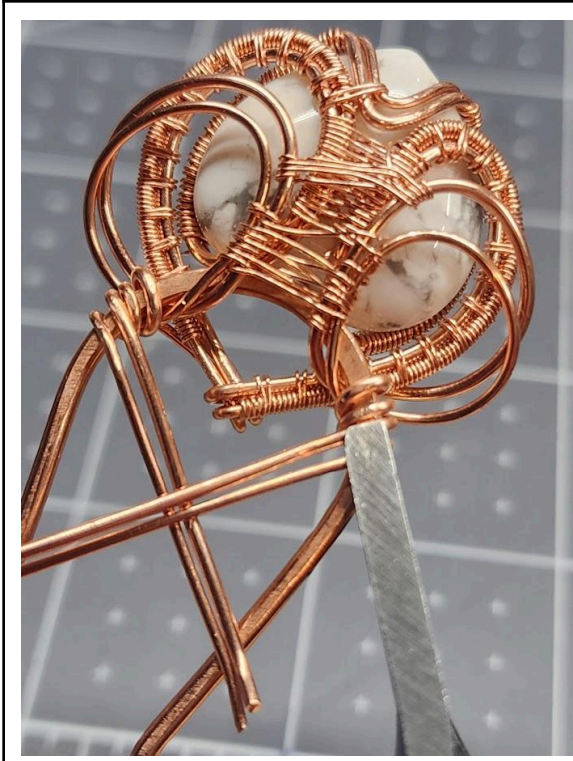


Follow the remainder of the images from left to right all the way to finish.

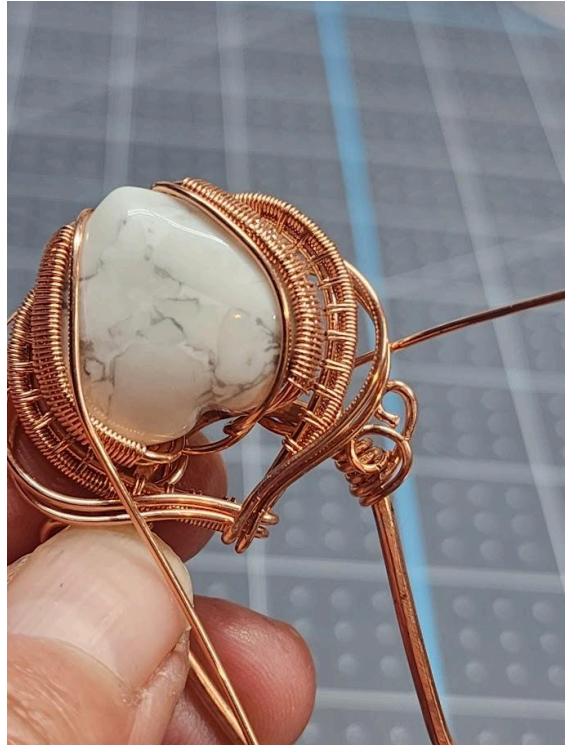


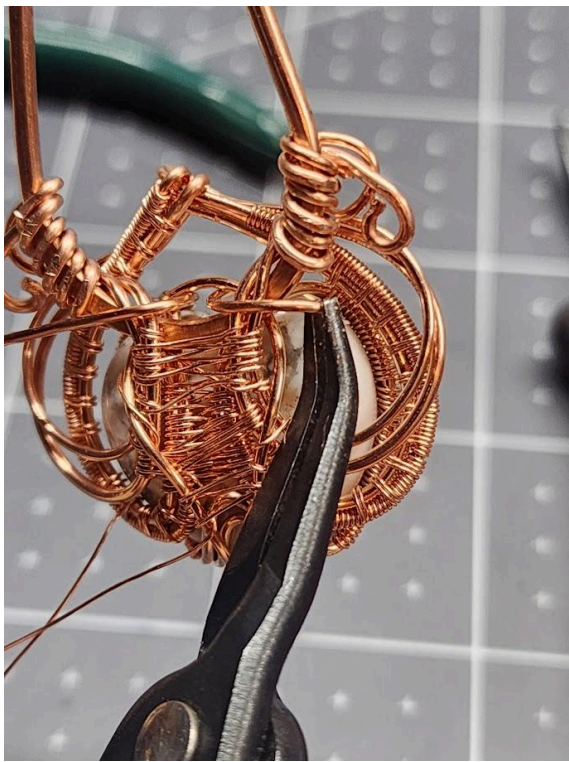
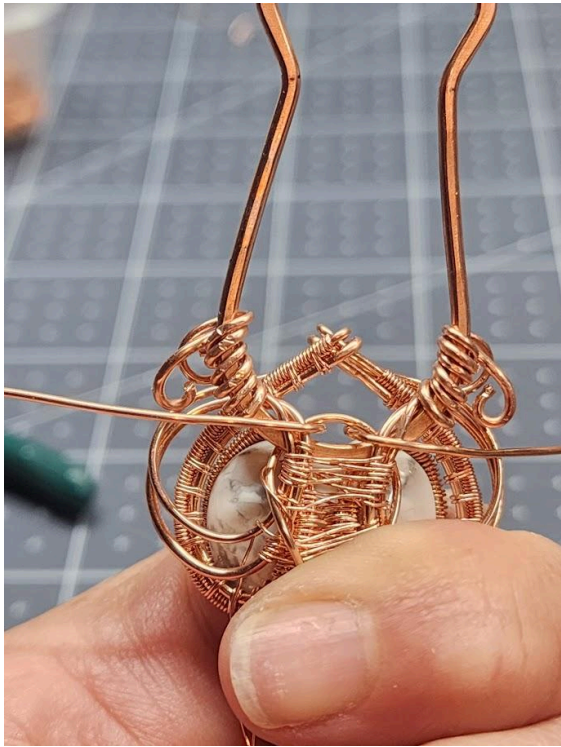


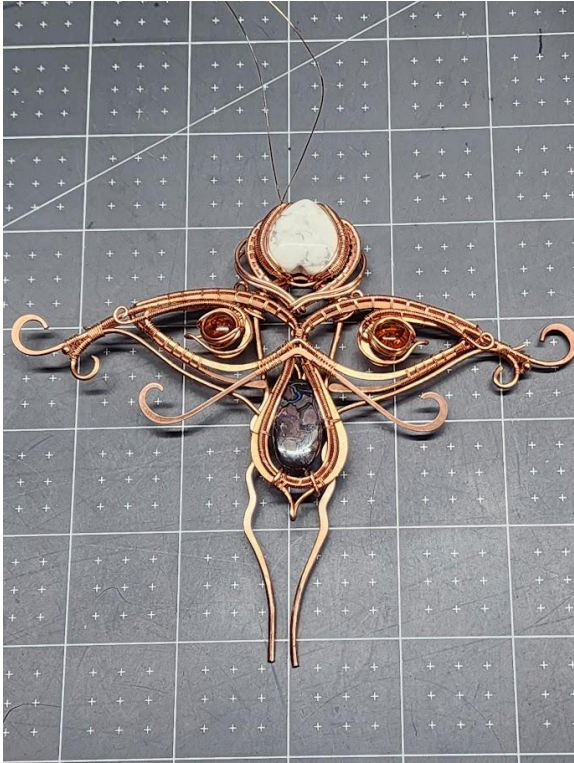












You could also add this to your Sekhmet if you choose!

Much love!

Perfectly Twisted Jewelry